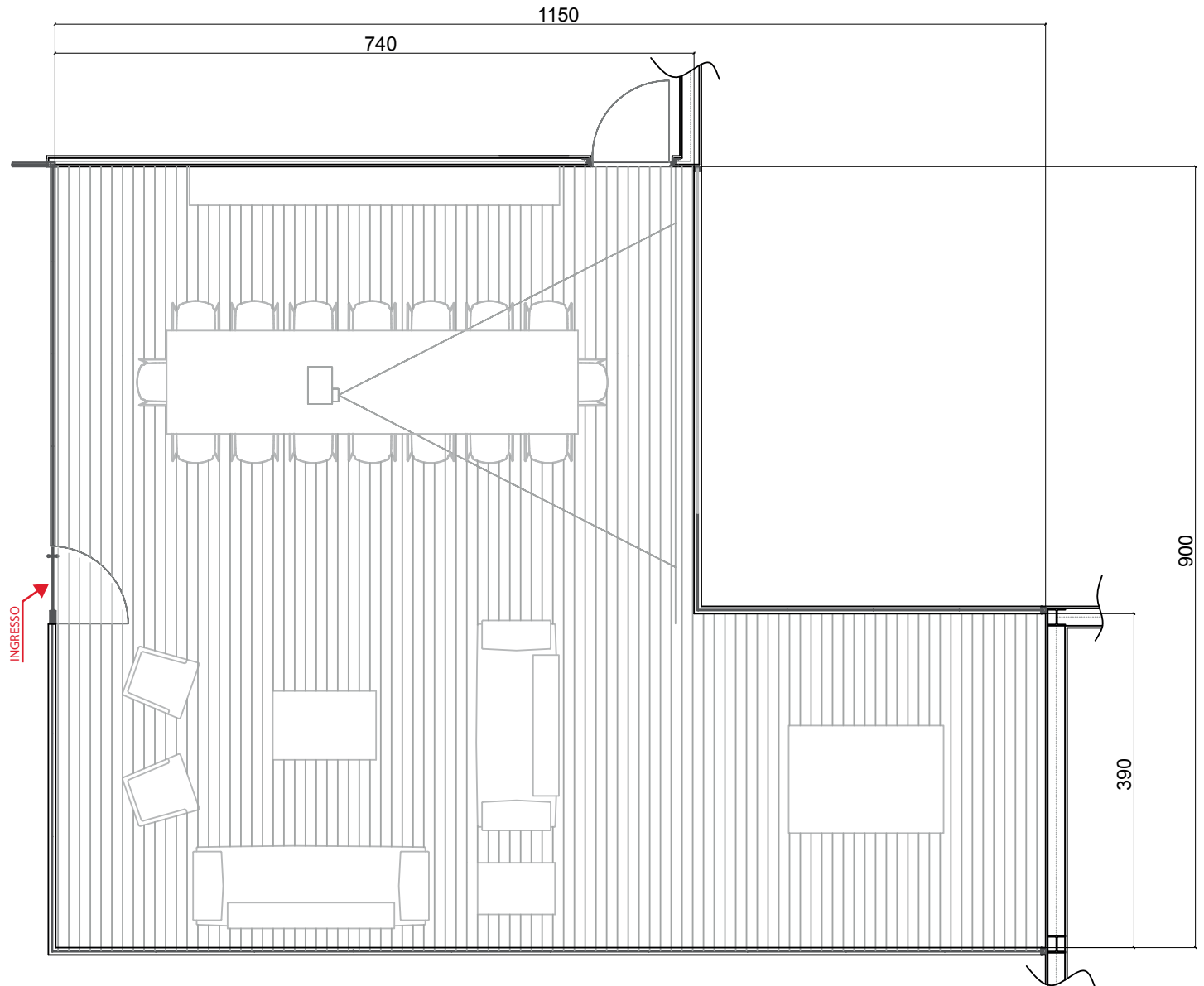


location:

SALA MEETING MEETING ROOM



DETTAGLI TECNICI:

- Dimensioni: 9 x 11.5 m - h 2.85 m
- Superficie (al lordo degli arredi): 83,5 m²
- Capienza: _ 25 persone
- Dotazione:
 - _ Proiettore da 3000 ansi lumen con connessione HDMI/VGA
 - _ Schermo 1,6x1,7 m
 - _ Tavolo
 - _ Sedie

TECHNICAL DETAILS:

- Dimensions: 9m x 11.5m - h. 2.85m
- Surface area (including furnishings): 83.5m²
- Capacity: _ 25 people
- Fittings:
 - _ 3000 ansi lumen projector with HDMI/VGA connection
 - _ Screen (1.6m x 1.7m)
 - _ Table
 - _ Chairs